

# For Sale - Elgin, IL

1950 Big Timber Road  
Elgin, IL

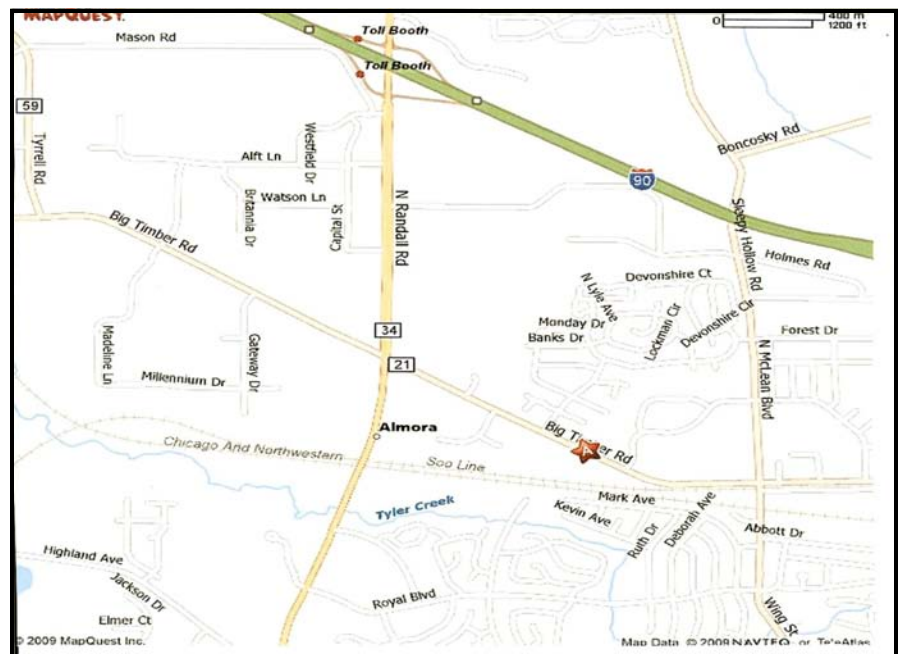
- NEC of Big Timber Road and North Lyle Avenue.
  - The intersection has a full traffic signal.
- 
- Minutes From Sherman Hospital
  - Across from Elgin - Big Timber Metra Train Station
  - Great Re-Development Opportunity
  - Potential General/Medical Offices
- 
- Building square footage includes fully useable basement of 7,980 sf
  - 75 Parking Spaces
  - 6 Drive Thru Lanes
  - Building Constructed in 1993
  - Note - Building is presently occupied and tenants should not be disturbed

Robert Stack  
Office/Cell (708) 738-4860  
Robert.Stack@  
TrotterDevelopmentLLC.com

Mike Mallon  
Office (630) 510-3225  
Cell (708) 878-1689  
Mike.Mallon@malloninc.com



16,008 sf Professional Services/  
Retail Building Located on 3.39  
Acre Parcel





N. Lyle Ave

Big Timber Rd

Matthew Ct

575'

252'

283010

© 2009 Tele Atlas